

Knapsack Reserve

Walks from here

Knapsack Reserve is part of the historic Blue Mountains walking track network.

- Please ensure you are prepared for your walk including carrying **adequate food and water**.
- Ensure your fitness and skill is appropriate for the walk of your choice and that you are prepared for any **changes in weather**.



Marges Lookout

30 mins - 1.3km one way



Elizabeth Lookout

25 mins - 1.1km one way



Lennox Bridge via Marges Lookout

45 mins - 1.8km one way



Knapsack Bridge via Elizabeth Lookout

40 mins - 1.6km one way

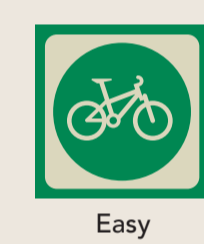


John Whitton Memorial Place via Elizabeth Lookout and Knapsack Bridge

1hr - 2.4km one way

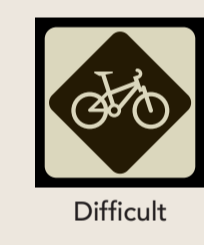
Note : Times and grades are given for walkers.

Rides in Knapsack



Cross Country Track

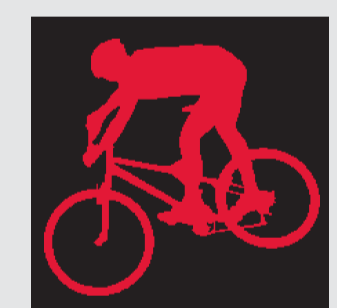
6.7 km loop suitable for novice riders
shared use – walkers welcome



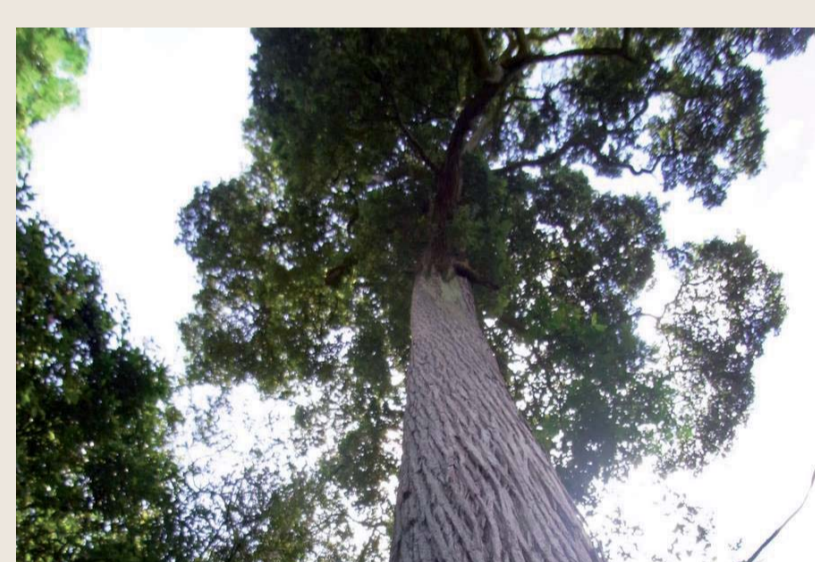
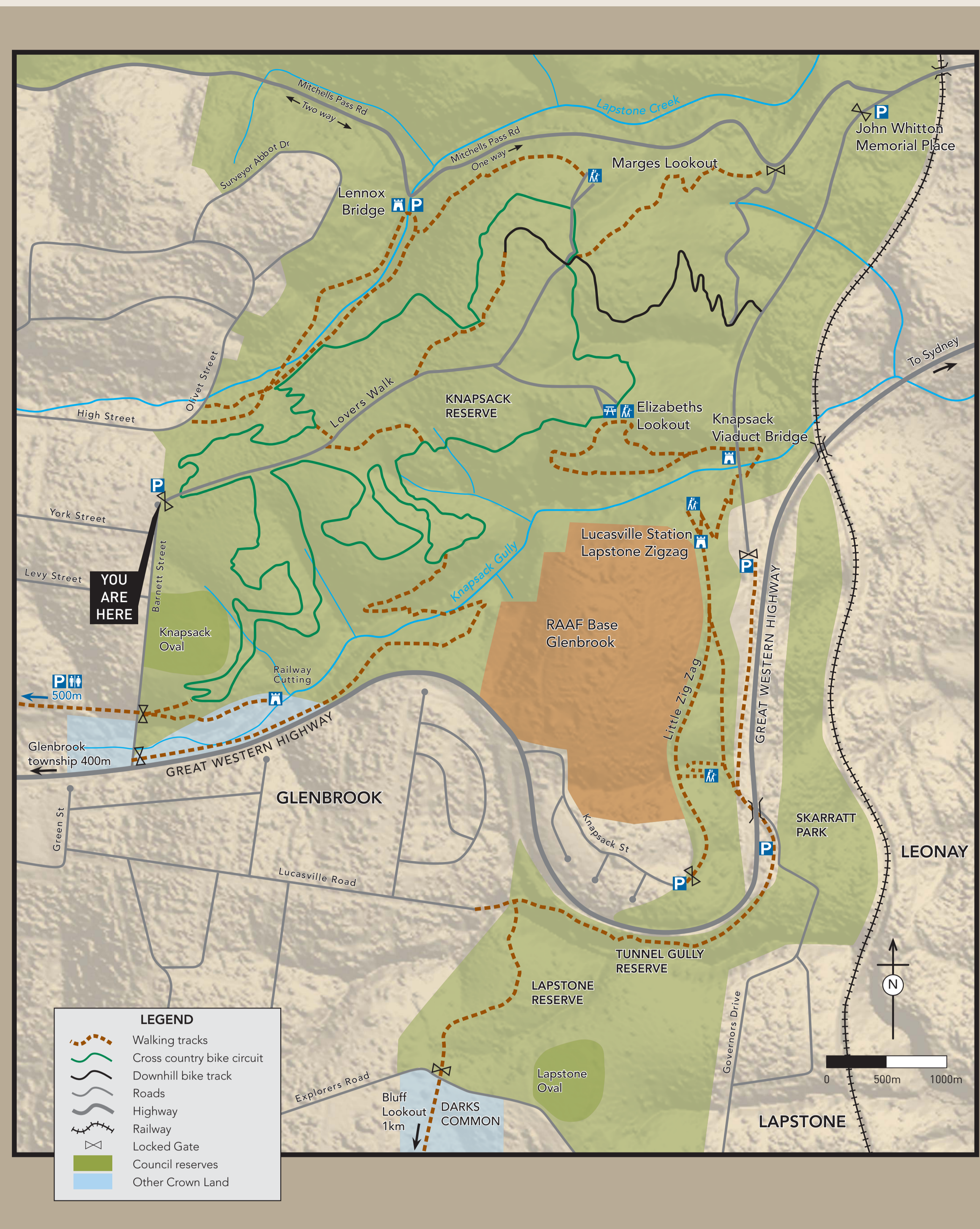
Downhill Track

1.14 km one way
Pedestrians prohibited

Mountain Bikers Code of Conduct



- Ride on designated open tracks only
- Tracks are closed during and after rain periods which result in wet or muddy conditions.
- Do not take short cuts or make new tracks
- Observe all signage and ride in direction indicated by arrows (if designated)
- Leave no trace – carry out your rubbish
- Have control of your bike at all times
- Be friendly and share the track
- Respect the rights of others
- Never damage plants or frighten fauna
- Make sure your bike is in good repair – brakes, frame, tyres
- Down hill riders must slow down and give caution when crossing Lovers Walk
- Cross country riders give way to walkers and horse riders

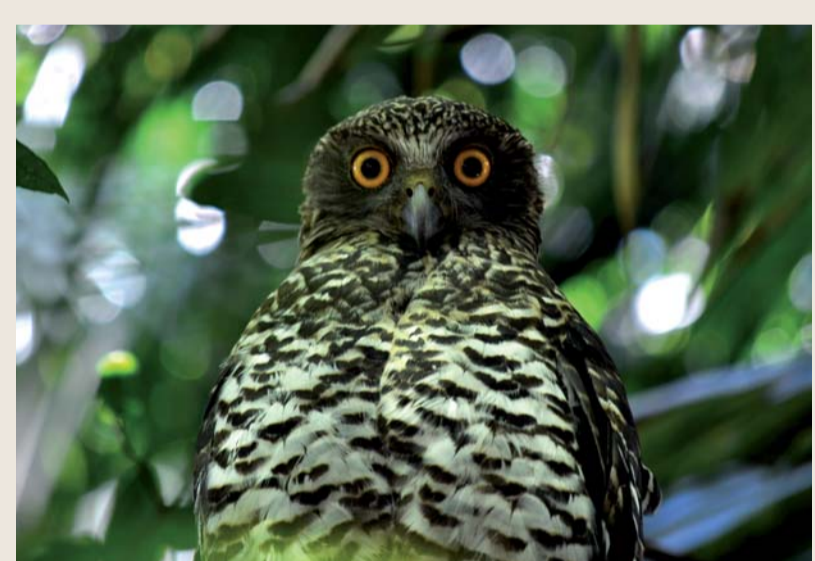


A Threatened Ecological Community is a group of plants and animals listed as facing a very high risk of extinction in NSW and / or Australia, and is protected by legislation. Within Knapsack Reserve two Commonwealth listed Threatened Ecological Communities occur, Shale Sandstone Transition Forest & Sydney Turpentine – Ironbark Forest. The later is listed as critically endangered.



Phytophthora Dieback - *Phytophthora cinnamomi* is a microscopic organism that lives in soil and plant roots and attacks the root system and stems of plants. It causes dieback and death. Any movement of infested soil can spread the disease. This includes soil on footwear and tyres.

Come clean, leave Clean !



The Powerful Owl (*Ninox strenua*) is found within parts of Knapsack Reserve in open gullies with dense understoreys, especially along watercourses. They need large hollows in old growth trees to nest, and eat mainly medium to large tree-dwelling mammals. This species is listed as Vulnerable in NSW.



Lennox Bridge – Designed by David Lennox and opened in 1833 it is the oldest surviving stone arch bridge on the Australian mainland.
Photographer James Mortimer



Knapsack Viaduct - was initially built in 1863 to carry the single railway line heading west through the Blue Mountains.
Photographer James Mortimer



Mountain Bikes



Walking Tracks



Dog must be on lead in Council Area



Supervise Children



WARNING Cliff edge



Uneven Ground



Riders must wear helmets



No motor bikes



No fires outside of designated areas

